

BOUTIQUE RETAIL CENTER / FOR LEASE

135TH STREET & ROE AVENUE • LEAWOOD, KS



PROPERTY INFORMATION

- NWQ 135th & Roe Avenue
- Leawood's Premier Event Space: *'The Venue'*
- Strong Retail & Residential Market
- Excellent Parking

AVAILABLE SPACE(S)

- 2,200 SF (Unit 170)
- 2,394 SF (Unit 250)
- 4,370 SF (Units 220 - 230)
- 4,422 SF (Units 280 - 300)
- 5,000 SF (Units 180 - 190)
- \$22.00 / SF NNN

DEMOGRAPHICS

	1 MILE	3 MILES	5 MILES
Est. Population:	9,121	73,690	163,176
AVG. HH Income:	\$180,343	\$154,106	\$142,123
Est. # of Employees:	3,180	74,477	131,091

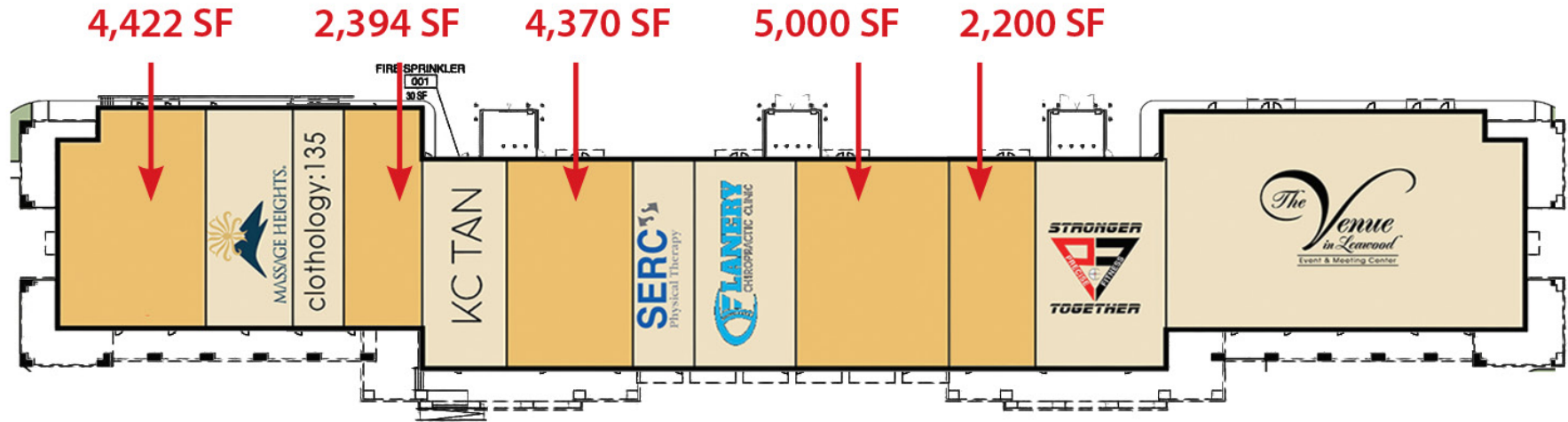


BOUTIQUE RETAIL CENTER / FOR LEASE

135TH STREET & ROE AVENUE • LEAWOOD, KS



SITE PLAN



BOUTIQUE RETAIL CENTER / FOR LEASE

135TH STREET & ROE AVENUE • LEAWOOD, KS



SITE PLAN



PARKWAY PLAZA, LEAWOOD, KS



BOUTIQUE RETAIL CENTER / FOR LEASE

135TH STREET & ROE AVENUE • LEAWOOD, KS



AVAILABLE



**GASPERI
GROUP**
COMMERCIAL REAL ESTATE LLC



GasperiGroup.com

STEVE GASPERI
steve@gasperigroup.com
M | 816-591-9764

BOUTIQUE RETAIL CENTER / FOR LEASE

135TH STREET & ROE AVENUE • LEAWOOD, KS



CURRENT TENANTS



**GASPERI
GROUP**
COMMERCIAL REAL ESTATE LLC



Gasperigroup.com

STEVE GASPERI
steve@gasperigroup.com
M | 816-591-9764

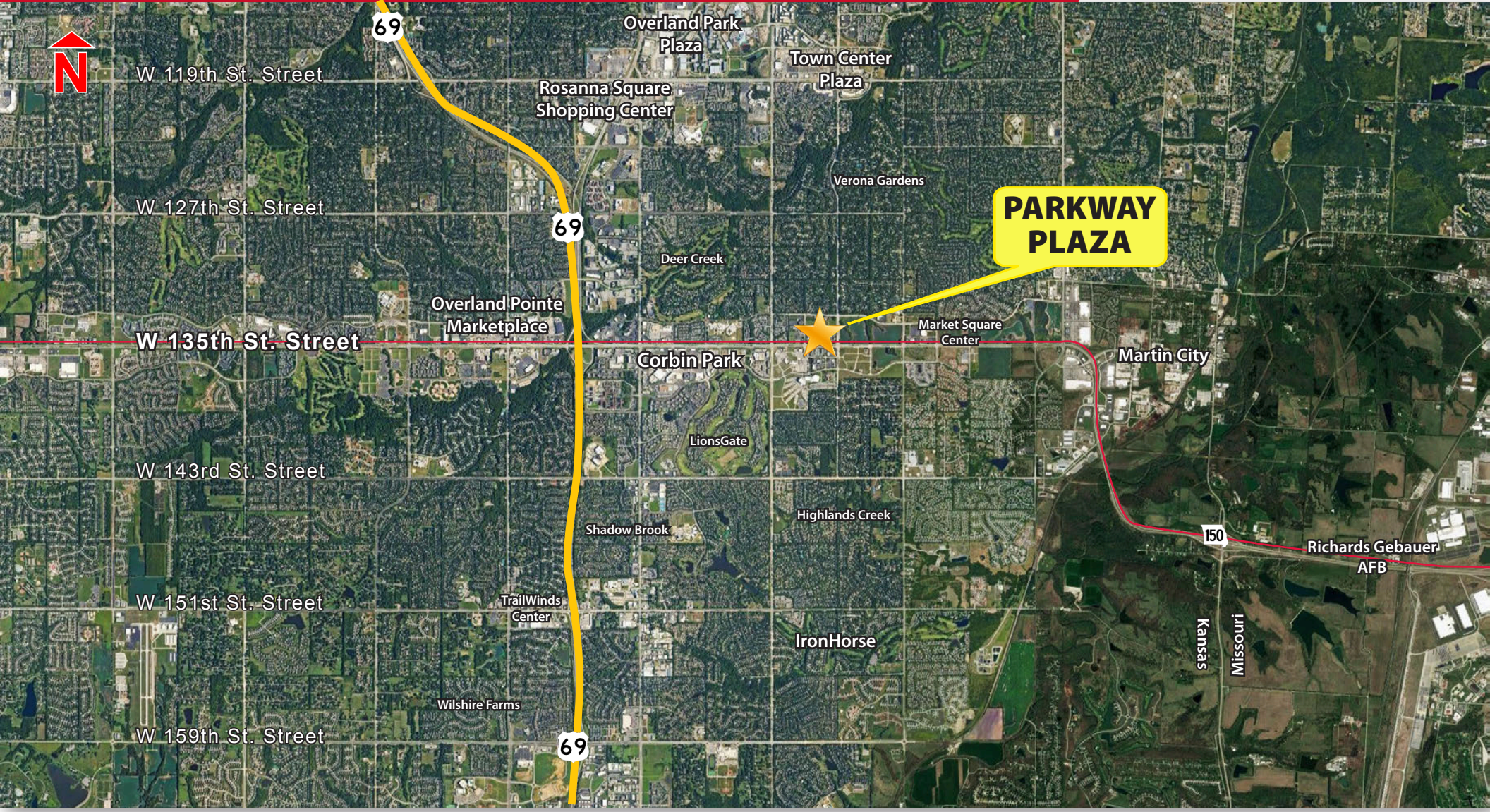
BOUTIQUE RETAIL CENTER / FOR LEASE

135TH STREET & ROE AVENUE • LEAWOOD, KS



BOUTIQUE RETAIL CENTER / FOR LEASE

135TH STREET & ROE AVENUE • LEAWOOD, KS



Gasperi Group Commercial Real Estate, LLC
4121 W. 83rd St., Ste. 107, Prairie Village, Kansas 66208

GASPERI GROUP
COMMERCIAL REAL ESTATE LLC



GasperiGroup.com

This document has been prepared by Gasperi Group for advertising and general information only. Gasperi Group makes no guarantees, representations or warranties of any kind, expressed or implied, regarding the information including, but not limited to, warranties of content, accuracy and reliability. Any interested party should undertake their own inquiries as to the accuracy of the information. Gasperi Group excludes unequivocally all inferred or implied terms, conditions and warranties arising out of this document and excludes all liability for loss and damages arising there from. This publication is the copyrighted property of Gasperi Group and/or its licensor(s). © 2023. All rights reserved.