

BOUTIQUE RETAIL CENTER / FOR LEASE

13456 W. 127th Street • OVERLAND PARK, KS 66213



PROPERTY INFORMATION

- NEQ 127th & Pflumm Rd.
- Strong Neighborhood Demographics
- Next to Walgreen's & Scooter's Coffee

AVAILABLE SPACE(S)

2,572 SF @ \$21.00/SF NNN

- Perfect for Retail/Fitness/Office
- Parking Ratio: 4.23/1,000
- * Monument Signage on 127th Street

DEMOGRAPHICS

	3 MILES	5 MILES
Est. Population:	98,737	242,235
Total Households:	38,742	94,680
AVG. HH Income:	\$116,957	\$117,154
Est. # of Employees:	3,414	10,696

All Lease Rates - NNN

**GASPERI
GROUP**
COMMERCIAL REAL ESTATE LLC



GasperiGroup.com

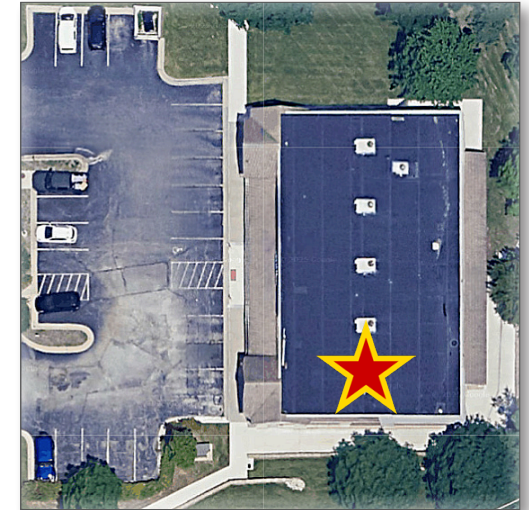
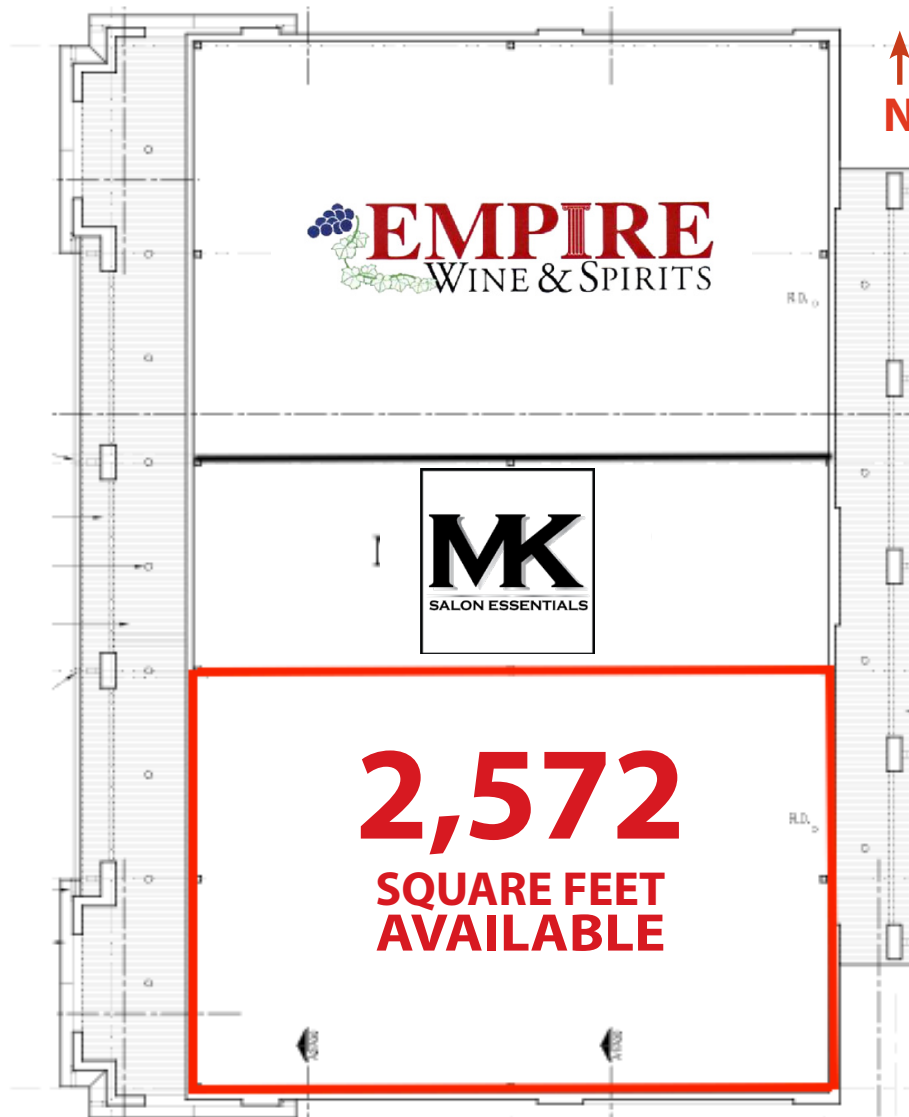
STEVE GASPERI
steve@gasperigroup.com
M | 816-591-9764

BOUTIQUE RETAIL CENTER / FOR LEASE

13456 W. 127th Street • OVERLAND PARK, KS 66213



SITE PLAN



**GASPERI
GROUP**
COMMERCIAL REAL ESTATE LLC



GasperiGroup.com

STEVE GASPERI
steve@gasperigroup.com
M | 816-591-9764

BOUTIQUE RETAIL CENTER / FOR LEASE

13456 W. 127th Street • OVERLAND PARK, KS 66213



THE SPACE



**GASPERI
GROUP**
COMMERCIAL REAL ESTATE LLC

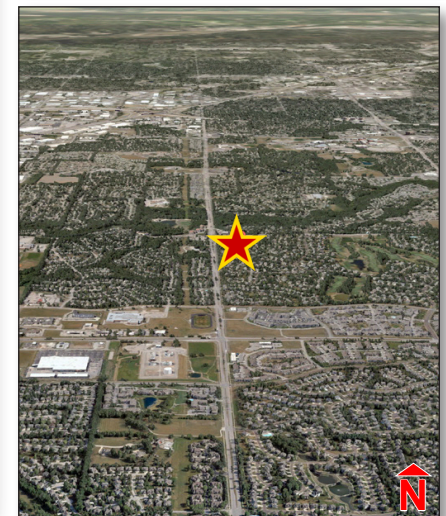
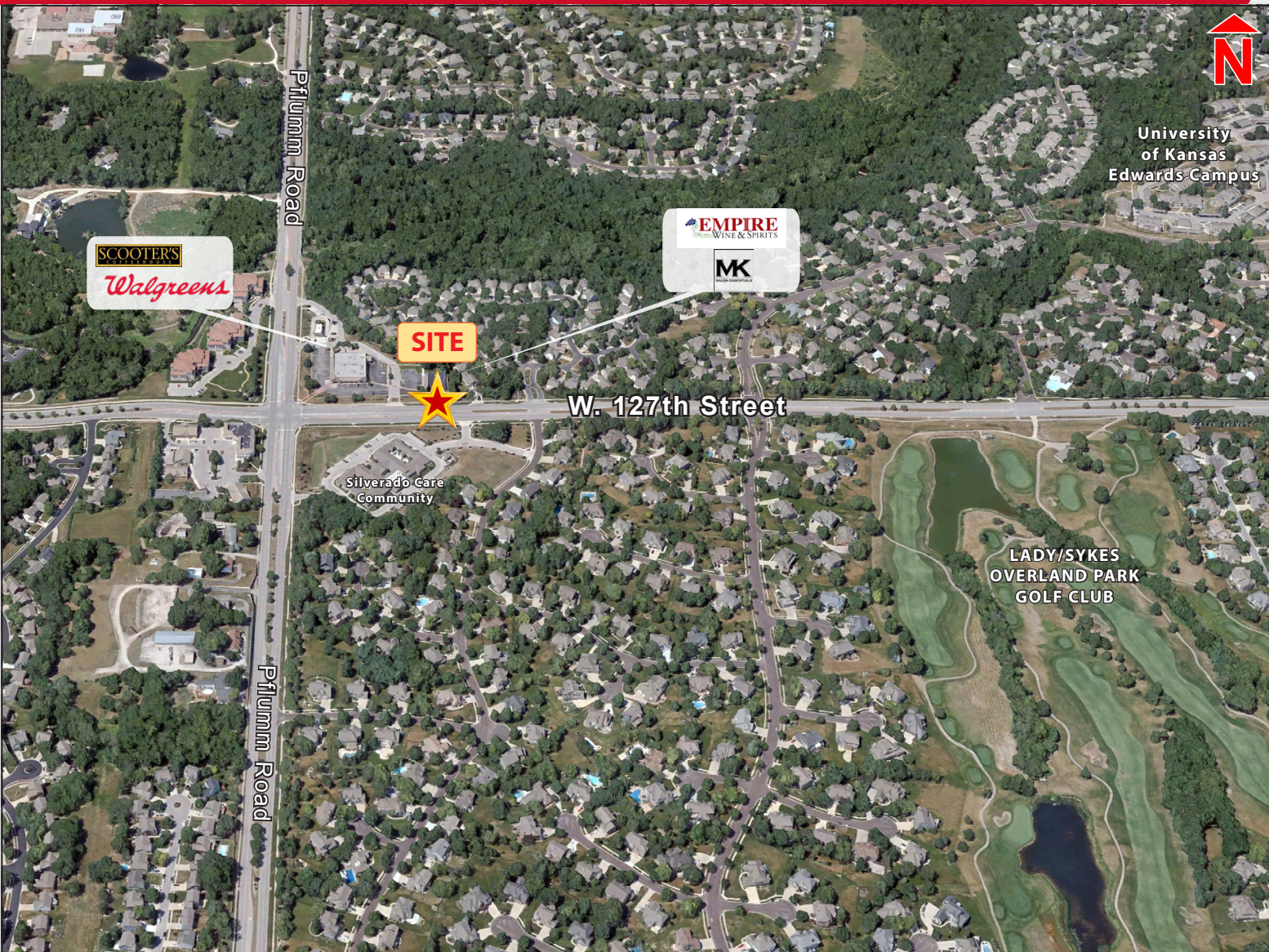


GasperiGroup.com

STEVE GASPERI
steve@gasperigroup.com
M | 816-591-9764

BOUTIQUE RETAIL CENTER / FOR LEASE

13456 W. 127th Street* • OVERLAND PARK, KS 66213



**GASPERI
GROUP**
COMMERCIAL REAL ESTATE LLC



GasperiGroup.com

This document has been prepared by Gasperi Group for advertising and general information only. Gasperi Group makes no guarantees, representations or warranties of any kind, expressed or implied, regarding the information including, but not limited to, warranties of content, accuracy and reliability. Any interested party should undertake their own inquiries as to the accuracy of the information. Gasperi Group excludes unequivocally all inferred or implied terms, conditions and warranties arising out of this document and excludes all liability for loss and damages arising there from. This publication is the copyrighted property of Gasperi Group and/or its licensor(s). © 2025. All rights reserved.

Gasperi Group Commercial Real Estate, LLC
13132 Reed Rd. Overland Park, Kansas 66209